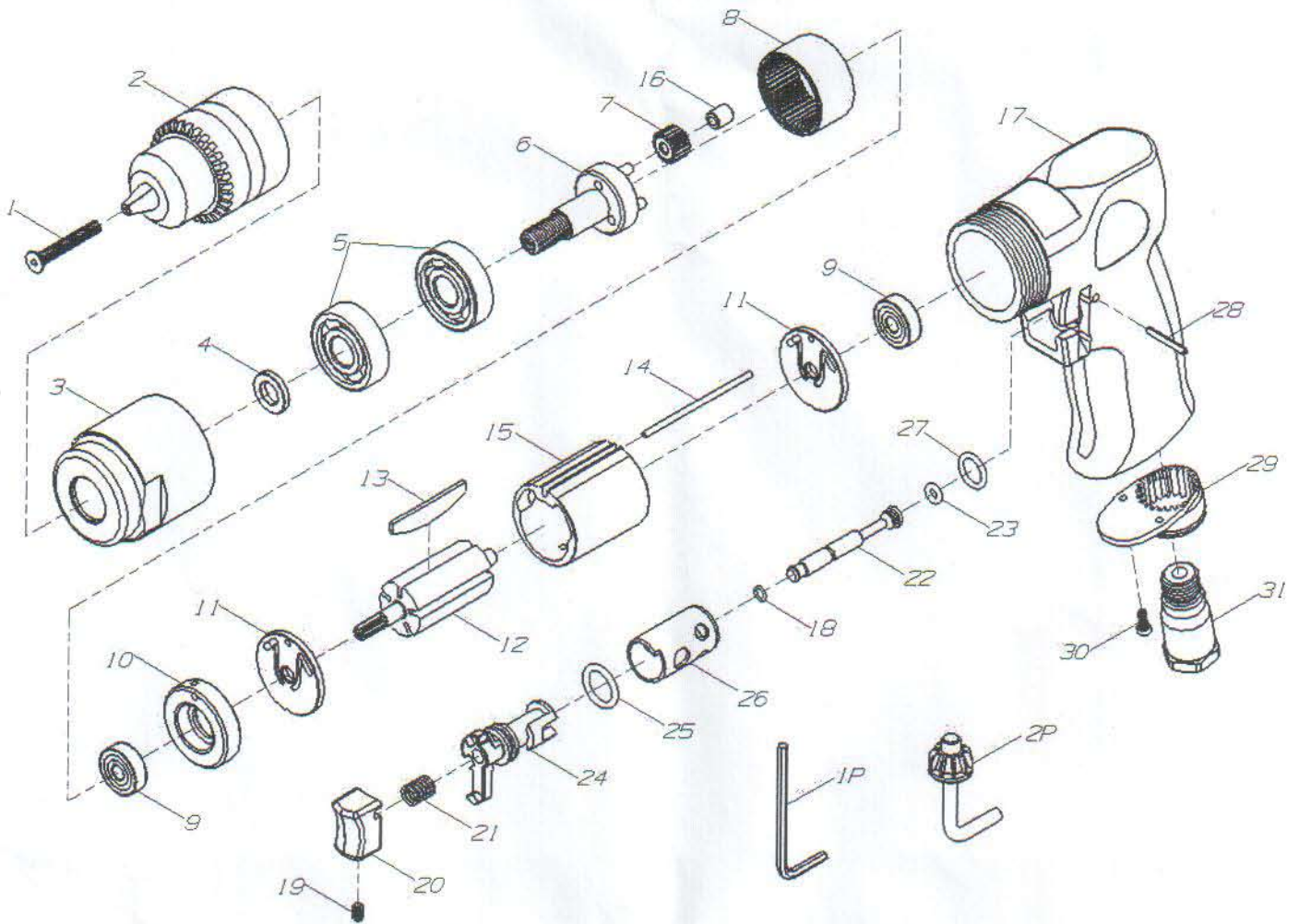


DIAGRAM OF D10-1S



Index No.	Part No.	Description	No. Req'd	Index No.	Part No.	Description	No. Req'd
1	351-0614	Screw	1	17	351-0632	Motor Housing	1
1P	351-0615	Allen Wrench	1	17P	351-0633	Housing Sleeve	1
2	12200-0000018-1	3/8" Drill Chuck / Keyless Chuck	1	19	351-0634	Detent Rubber	1
2P	351-0617	Chuck Key	1	20	351-0635	Trigger (Zinc)	1
3	351-0618	Gear Housing	1	20P	351-0636	Set Screw (For Zinc Trigger)	1
4	351-0619	Washer	1	21	351-0637	Valve Spring	1
5	351-0620	Ball Bearing	2	22	351-0638	Valve	1
6	351-0621	Planet Carrier	1	22P	351-0639	O-Ring	1
7	351-0622	Planet Gear	3	23	351-0640	O-Ring	1
8	351-0623	Internal Gear	1	24	351-0641	Reverse Valve	1
9	351-0624	Ball Bearing	2	25	351-0642	O-Ring	1
10	351-0625	Bearing Case	1	26	351-0643	Reverse Valve Bushing	1
11	351-0626	Rear End Plate	2	27	351-0644	O-Ring	1
12	351-0627	Rotor	1	28	351-0645	Pin	1
13	351-0628	Rotor Blade	5	29	351-0646	Exhaust Deflector	1
14	351-0629	Motor Pin	1	30	351-0647	Screw	2
15	351-0630	Cylinder	1	31	351-0648	Inlet Bushing	1
16	351-0631	Gear Bushing	1				