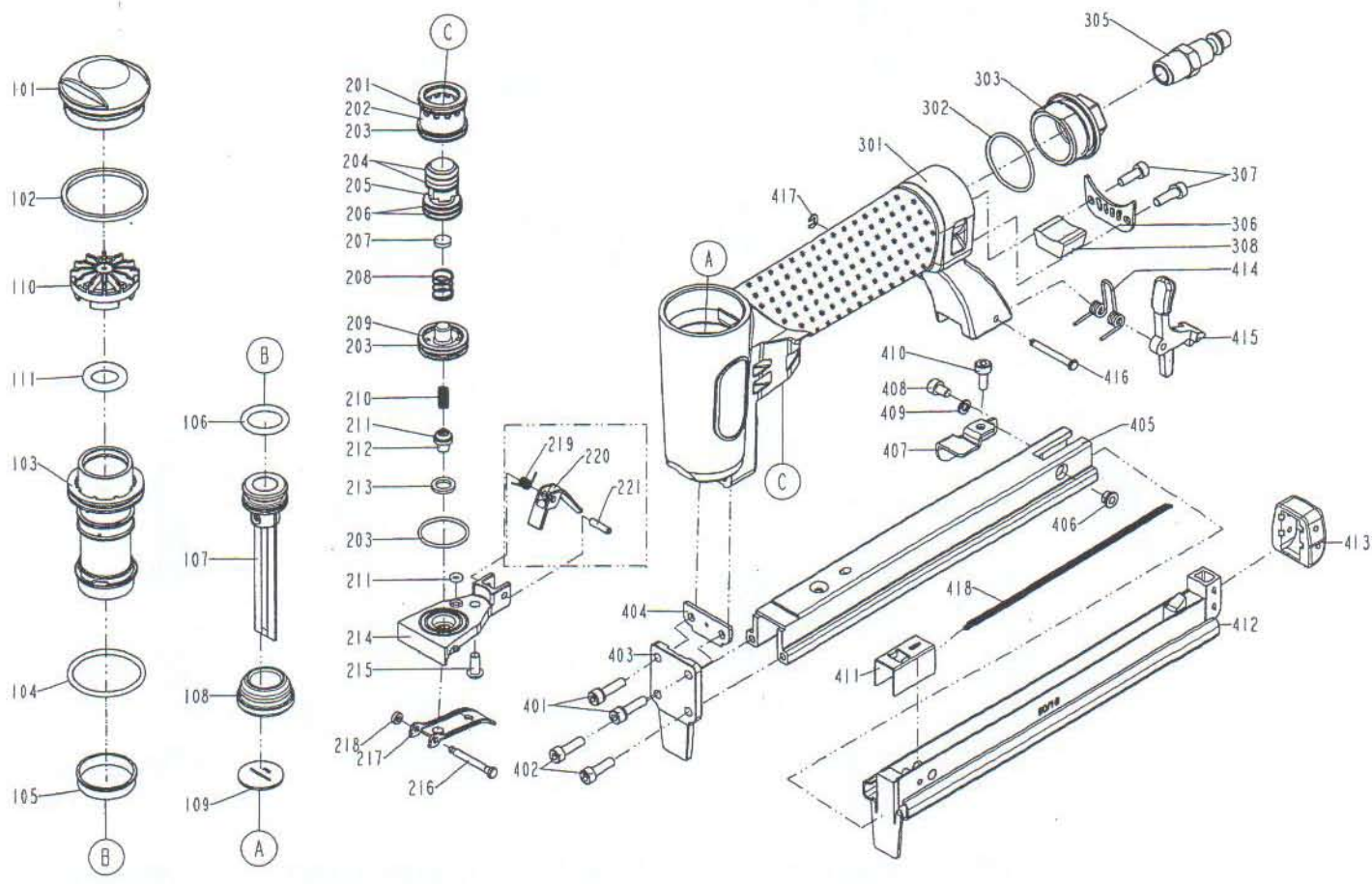


DIAGRAM OF S-8016



ITEM NO.	PART NO.	DESCRIPTION	ITEM NO.	PART NO.	DESCRIPTION	ITEM NO.	PART NO.	DESCRIPTION
101	11371-0034703-1	DEFLECTOR	302	2041109-03040-0	O - RING			
102	1132M-0034701-1	PACKING	303	11346-0031301-1	END CAP			
103	11320-0030005-1	CYLINDER	305	1135V-0000005-1	AIR PLUG			
104	2041109-04070-0	O - RING	306	11394-0034702-1	GUIDE PLATE			
105	11322-0034701-1	CYLINDER RING	307	2040101-02060-0	HEX.SOC.HD.BOLT			
106	2041106-02010-0	O - RING	308	1132T-0030002-1	MUFFLER			
107	11204-0044705-1	DRIVER UNIT	401	2040100-02080-0	BOLT ASSY			
108	11327-0734701-2	BUMPER	402	2040101-02070-0	HEX.SOC.HD.BOLT			
109	11388-0044701-1	DRIVER GUIDE	403	11351-0044701-1	DRIVER GUIDE COVER			
110	11370-0034702-1	SEAL	404	11380-0044701-1	GASKET			
111	2041107-02010-0	O-RING	405	11391-0044701-1	MAGAZINE B			
201	2041104-02080-0	O - RING	406	1131F-0034701-1	ANCHOR BLOCK			
202	11373-0030002-1	TRIGGER VALVE HEAD	407	11323-0044701-1	BRACKET			
203	2041109-03030-0	O - RING	408	2040101-02020-0	HEX.SOC.HD.BOLT			
204	2041109-02080-0	O - RING	409	2040201-02040-0	FLAT WASHER			
205	1133S-0030002-2	VALVE PLUNGER	410	2040101-02040-0	HEX.SOC.HD.BOLT			
206	2041109-02120-0	O - RING	411	11363-0044702-1	PUSHER			
207	1130J-0030001-1	CUSHION	412	11241-0044701-2	DRIVER GUIDE UNIT			
208	11376-0034701-1	SPRING	413	11390-0034701-1	PROTECTING HOOD COVER			
209	11374-0030002-1	PLUNGER CAP	414	11315-0034702-1	SPRING			
210	1133U-0014701-1	SPRING	415	11343-0034702-1	LATCH			
211	2041104-01020-0	O - RING	416	11344-0034701-1	LATCH PIN			
212	11375-0034701-1	PLUNGER	417	2040302-22010-0	E - RING			
213	11399-0033001-1	COLLAR	418	11328-0030001-1	PULL SPRING			
214	1133T-0030001-2	PLUNGER CAP						
215	2040102-02040-0	HALF ROUND HD.HEX.BOLT						
216	11318-0034702-1	TRIGGER PIVOT PIN						
217	11316-0034702-1	TRIGGER						
218	1131D-0460001-1	URETHANE RETAINER						
219	11315-0040001-1	SPRING						
220	1136S-0044701-2	SAFETY STOPPER						
221	2040400-05060-0	SPRING PIN						
301	11230-0036602-1	GUN BODY UNIT						