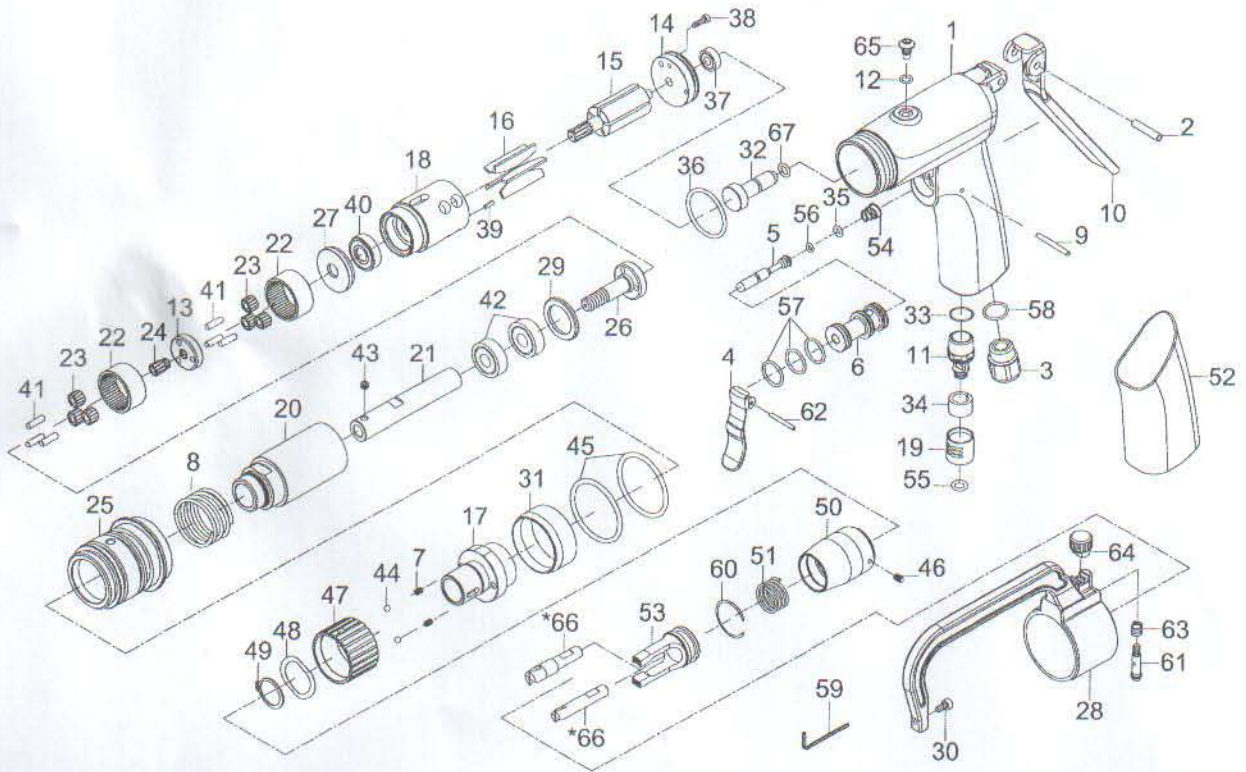


# SPOT DRILL



Index No.	Parts No.	Description	Index No.	Parts No.	Description
1	71-780101	Motor Housing	35	30107	O-Ring (5.8*1.9)
2	SP05002400	Spring Pin (5*24)	36	OR03105205	O-Ring (31.5*2.5)
3	66-6133C03	Air Inlet	37	052213	Ball Bearing (696zz)
4	71-780136	Throttle Lever	38	71-780138	Screw (M3*10)
5	71-780105	Valve Stem	39	61048	Spring Pin (2.5*8)
6	71-780106	Valve	40	07280421	Ball Bearing (609zz)
7	71-780107	Spring(2)	41	30124	Pin(6) (4*13.8)
8	71-780108	Spring	42	06000ZZ-2A	Ball Bearing(2) (6000zz)
9	PN03002908	Pin (3*29.8)	43	71946	Set Screw (M5*4)
10	71-780110	Push Arm	44	30143	Steel Ball(2) (5/32")
11	66-6133C23	Exhaust Shafte	45	OR03200300	O-Ring(2) (32*3)
12	20507	O-Ring (S6)	46	70122	Set Screw (M4*6)
13	71-780113	Gear Plate	47	72147	Adjusting Nut
14	71-780114	Rear End Plate	48	72139	Wave Washer
15	71-780115	Rotor	49	72140	Retaining Ring (STW-22)
16	80216	Rotor Blades (5)	50	72142	Adjust Attachment
17	71-780117	Adjusting Seat	51	72144	Spring
18	71-780118	Cylinder	52	71-780152	Grip
19	66-6133C24	Exhaust Sleeve	53	72146	Supporter
20	71-780120	Gear Housing	54	71-780137	Spring
21	71-780121	Bit Holder	55	76010	O-Ring (5.8*1.9)
22	71-780122	Internal Gear(2)	56	63036	O-Ring (3.5*1.5)
23	71-780123	Planet Gear (6)	57	72009	O-Ring(3) (15.7*1.7)
24	71-780124	Idler Gear	58	82247	O-Ring (13.5*1.5)
25	71-780125	Clamp Cage	59	10010	Spanner (2.5mm)
26	71-780126	Work Spindle	60	72145	Retainer (STW-22)
27	71-780127	Bearing Cap	61	71-780111	Lock Bar
28	71-780128	Steady Frame	62	80202	Spring Pin (2.5*24)
29	71-780129	Washer	63	71-780133	Spring
30	71-780130	Screw (M4*8)	64	71-780134	Knob
31	71-780131	Clamp Nut	65	71-780135	Screw (M6*1)
32	71-780132	Steel Bar		71-780139	Spot Weld Drill Bit (Ø10)
33	82209	O-Ring (14*1)	*66	71-780140	Spot Weld Drill Bit (Ø8)
34	66-6133C25	Muffler	67	OR00600200	O-Ring (6*2)