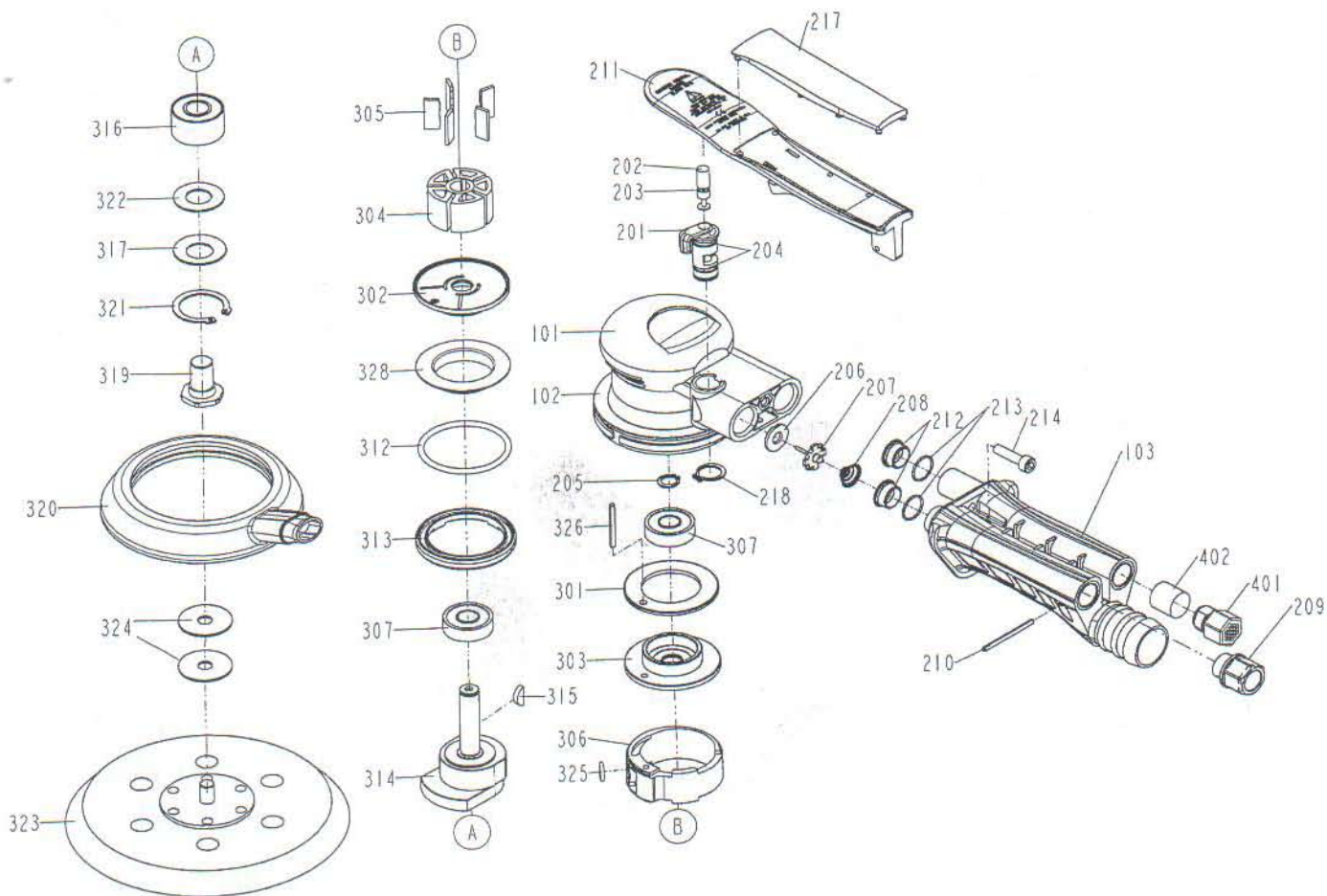


DIAGRAM OF S-H1



ITEM NO.	PART NO.	DESCRIPTION	ITEM NO.	PART NO.	DESCRIPTION	ITEM NO.	PART NO.	DESCRIPTION
101	12301-0184701-1	RUBBER OVERMOLD	320	12325-0224701-1	SHROUD			
102	12201-0223001-1	HOUSING	321	2040303-40010-0	SNAP RING			
103	12264-0224702-1	HANDLE	322	12350-0010001-1	BEARING SEAL			
201	12304-0011101-2	REGULATOR	323	12247-0010090-1	6" PAD (6) HOLES HOOK			
202	12305-0010002-1	VALVE STEM	324	12340-0014701-1	HEAT ISOLATION WASHER			
203	2041100-01040-0	O - RING	325	2041109-01130-0	O - RING			
204	2041109-01050-0	O - RING	326	2040400-05150-0	SPRING PIN			
205	2040301-16010-0	S - RING	328	1233F-0010001-1	GUIDE PLATE			
206	12306-0014701-1	SEAL	401	12327-0225101-1	MUFFLER SCREW			
207	12307-0014701-2	TIP VALVE	402	12351-0220002-1	MUFFLER			
208	12308-0214701-1	SPRING						
209	12309-0224702-1	AIR INLET						
210	2040401-04140-0	SPIRAL PINS						
211	12310-0224706-1	TRIGGER						
212	1231Y-0224701-1	LOCATION BLOCK						
213	2041109-02240-0	O - RING						
214	2040101-03090-2	HEX.SOC.HD.BOLT						
217	12310-0224705-1	TRIGGER						
218	2040301-15010-0	S - RING						
301	12311-0014702-1	FRONT RING						
302	12316-0010003-2	REAR END PLATE						
303	12312-0010002-1	FRONT END PLATE						
304	12313-0110001-1	ROTOR						
305	12314-0110001-1	BLADES						
306	12315-0014705-1	CYLINDER						
307	2041200-00041-0	BEARING						
312	2041100-05080-0	O - RING						
313	12321-0010003-1	LOCK RING						
314	12322-0014709-1	MOTER SHAFT BALANCER						
315	2040701-01010-0	ROTOR KEY						
316	2041201-00010-0	BEARING						
317	12323-0014701-1	BEARING SHIELD						
319	12324-0014702-1	BALANCER SHAFT						