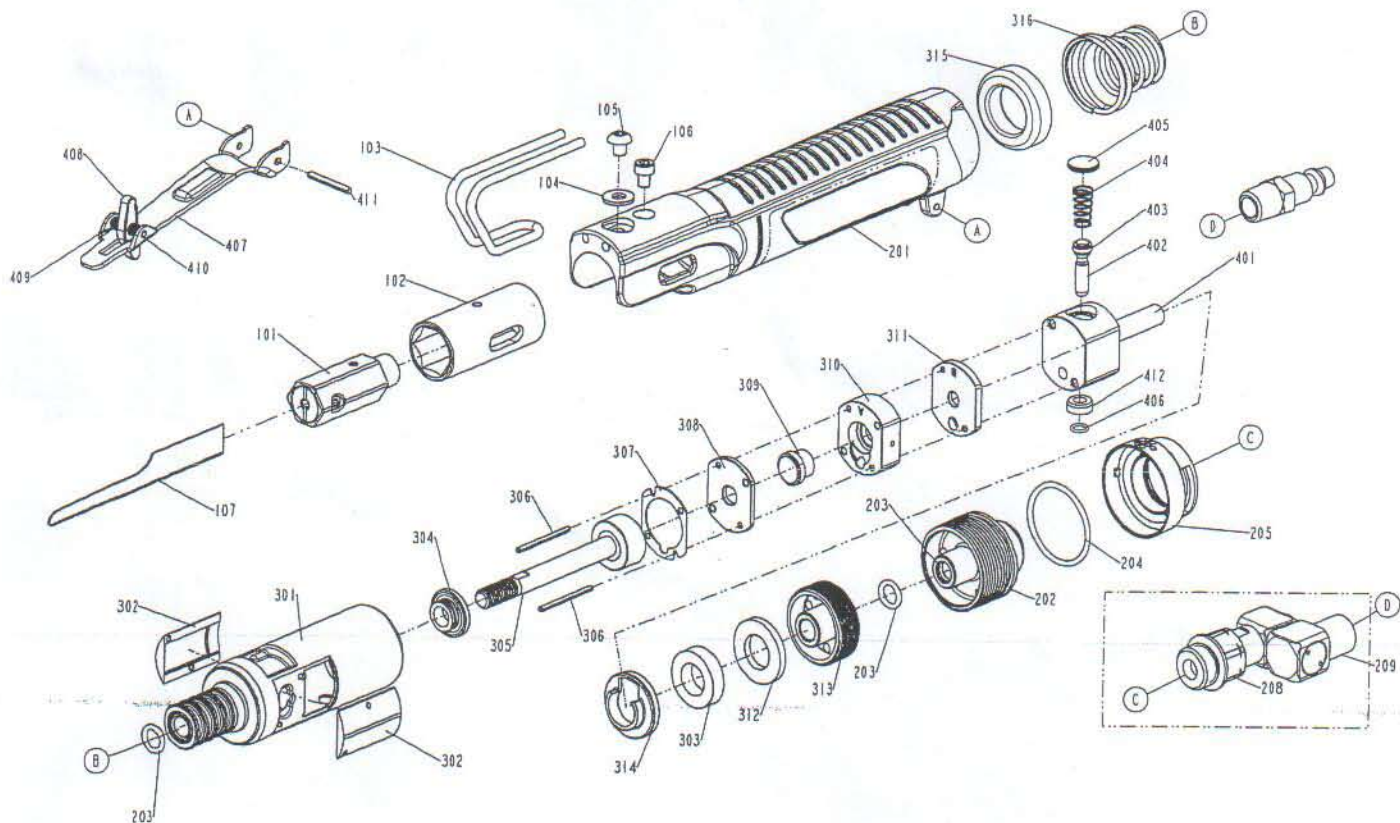


DIAGRAM OF SS-2



ITEM NO.	PART NO.	DESCRIPTION	ITEM NO.	PART NO.	DESCRIPTION	ITEM NO.	PART NO.	DESCRIPTION
101	12260-2020001-1	COLLET	402	12399-2024701-1	VALVE STEM			
102	1233H-2020001-1	GUIDE BLADE HOLDER	403	2041100-01040-0	O - RING			
103	1233J-2020001-1	GUARD BLADE	404	1230J-2024701-1	VALVE STEM SPRING			
104	2040201-03020-0	FLAT WASHER	405	12397-2024701-1	VALVE SEAL			
105	2040102-03090-0	HALF ROUND HD.HEX.BOLT	406	2041110-01010-0	O - RING			
106	2040101-02020-2	HEX.SOC.HD.BOLT	407	12310-2024701-1	TRIGGER			
107	1233E-2024701-1	18T SAW BLADE	408	12393-2024701-1	SAFETY			
107	1233E-2024703-1	32T SAW BLADE	409	12360-2024701-1	SPRING			
107	1233E-2024702-1	24T SAW BLADE	410	2040400-05090-0	SPRING PIN			
201	12302-2026601-1	HOUSING	411	2040400-04110-0	SPRING PIN			
202	1233K-2020001-1	END CAP	412	12345-2024701-1	LINING RING-THROTTLE VALVE			
203	2041100-01081-0	O - RING						
204	2041102-03030-0	O - RING						
205	12346-1014701-1	DEFLECTOR						
208	12309-0014703-1	AIR INLET						
209	1234B-2020002-1	SWIVEL AIR INLET JOINT SET						
301	12251-2024701-1	CYLINDER UNIT						
302	1233F-2020001-1	GUIDE PLATE						
303	12351-2020001-1	MUFFLER						
304	1233G-2024701-1	FEED BUMPER A						
305	1233D-2020001-1	PISTON SHAFT						
306	2040400-03150-0	SPRING PIN						
307	12341-2020001-1	PACKING						
308	1232E-2024701-1	BOTTOM STEM VALVE						
309	12385-2020001-1	DISCHARGE SHEET						
310	1232E-2024702-1	VALVE ASSEMBLY						
311	1232E-2024703-1	TOP STEM VALVE						
312	12326-2020001-1	MUFFLER						
313	12346-2020001-1	DEFLECTOR						
314	12328-2020001-1	MUFFLER CAP						
315	1233G-2024702-1	FEEB BUMPER B						
316	1230J-2024702-1	SPRING						
401	12377-2020001-1	BODY-THROTTLE VALVE						